

McGOVERN

Contract Lifting & Crane Hire

www.mcgovcranehire.co.uk

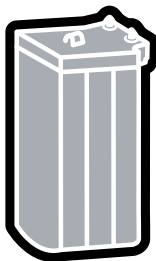
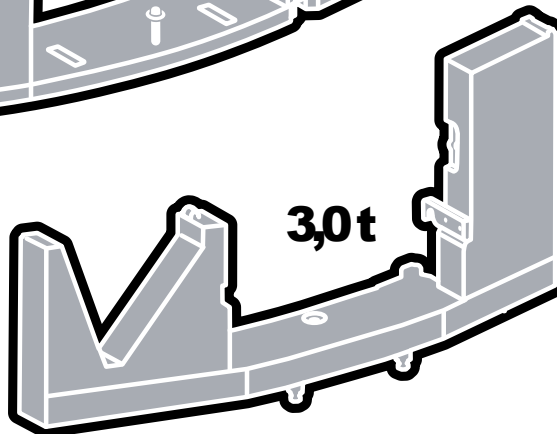
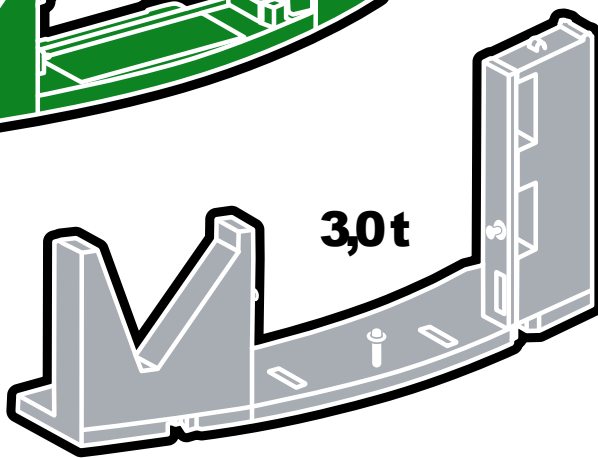
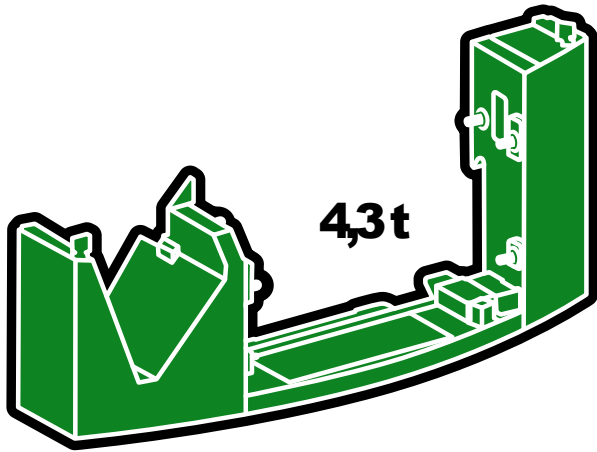
M K 140-5.1

Technical data
Mobile construction crane

McGOVERN

LIEBHERR

Ballast-Counterweight

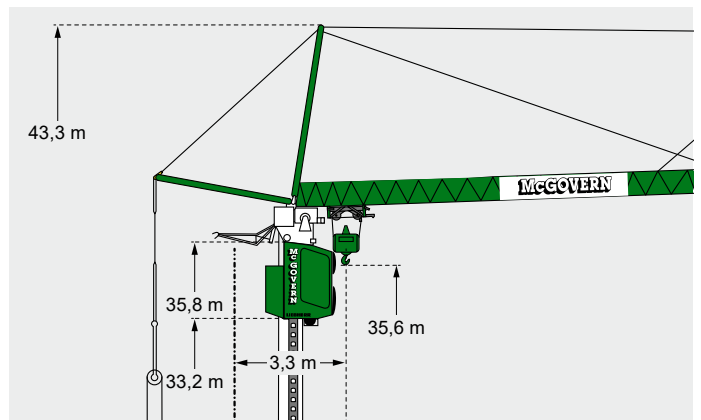
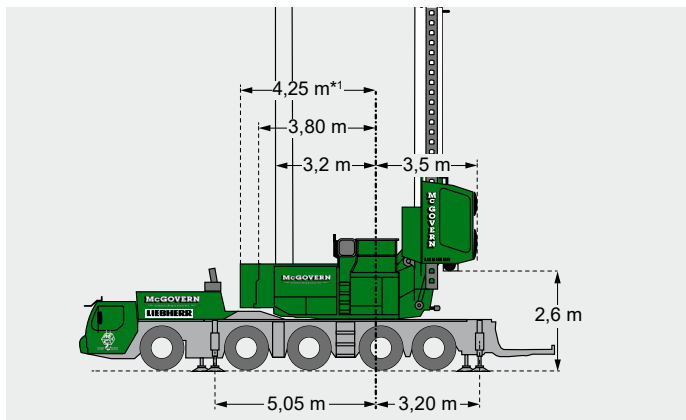
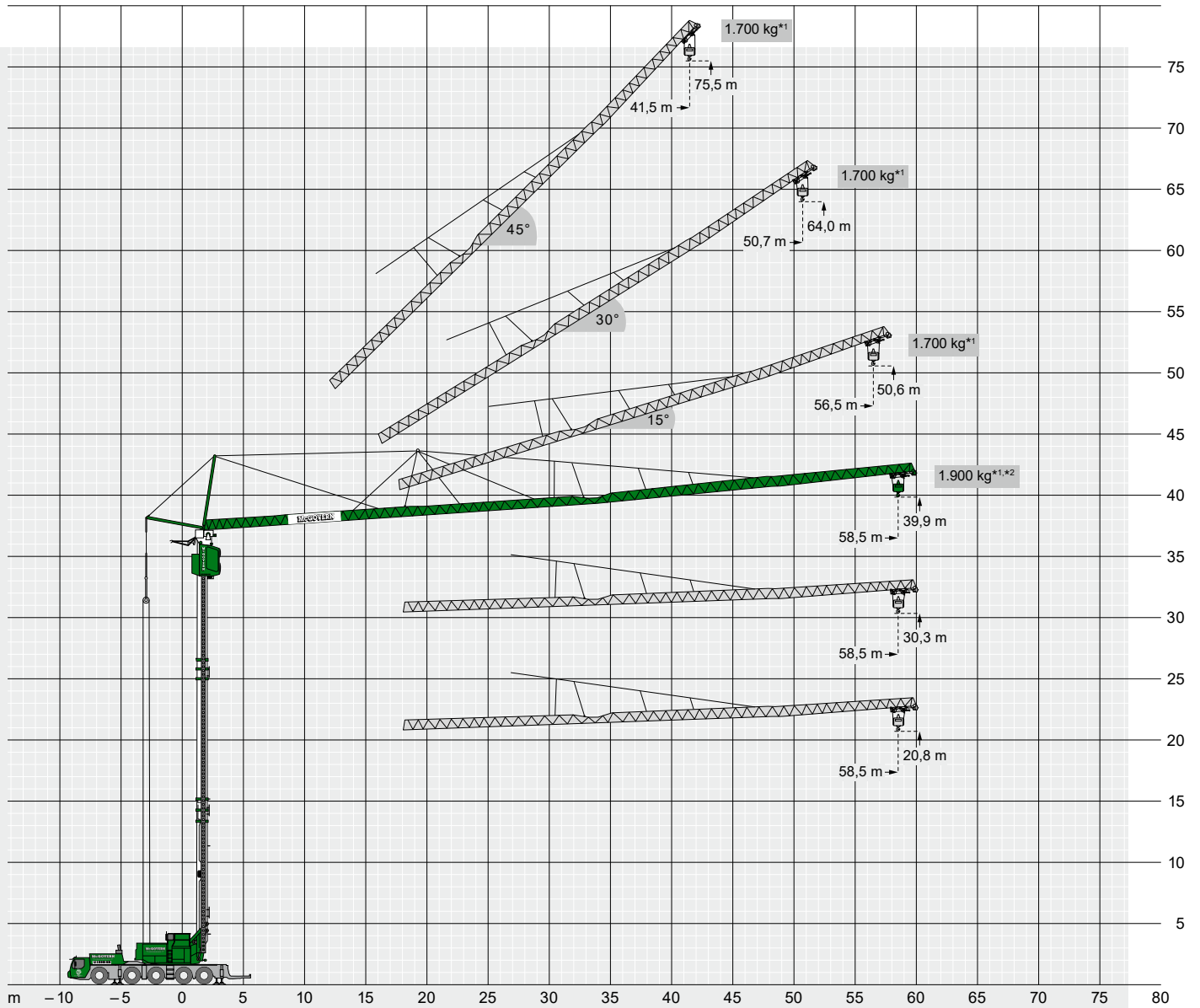


12t axle load



Technically transportable

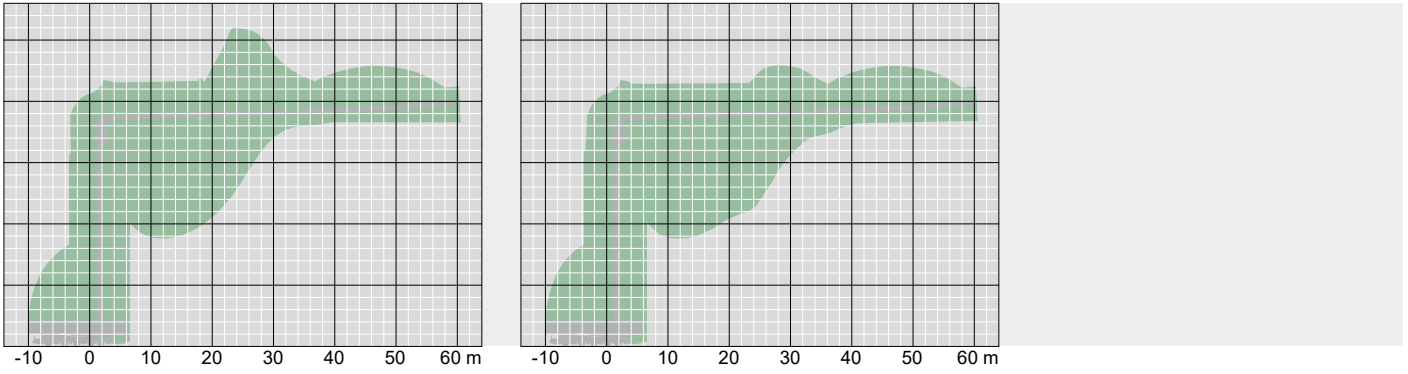
VarioJib



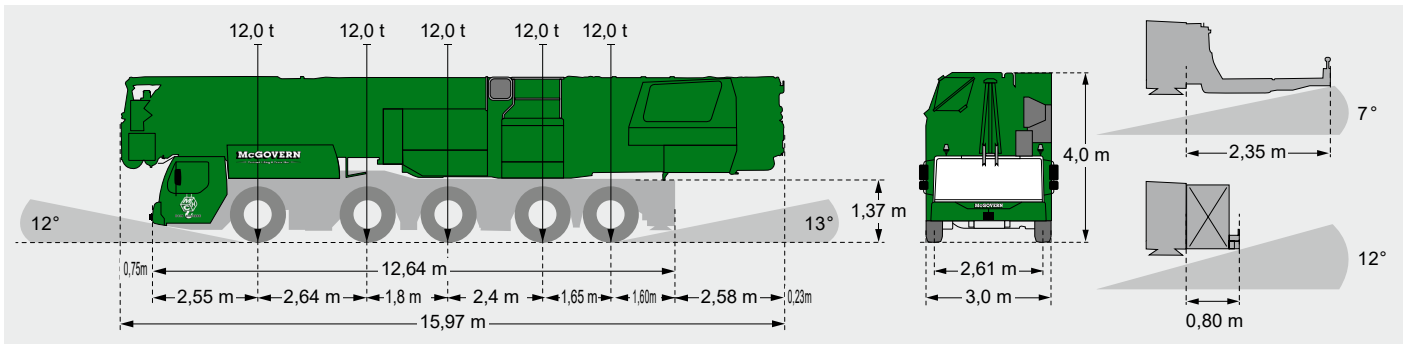
Plus load curves with control limitations in comparison to standard load curve. See the operating manual for more details.

MK 140

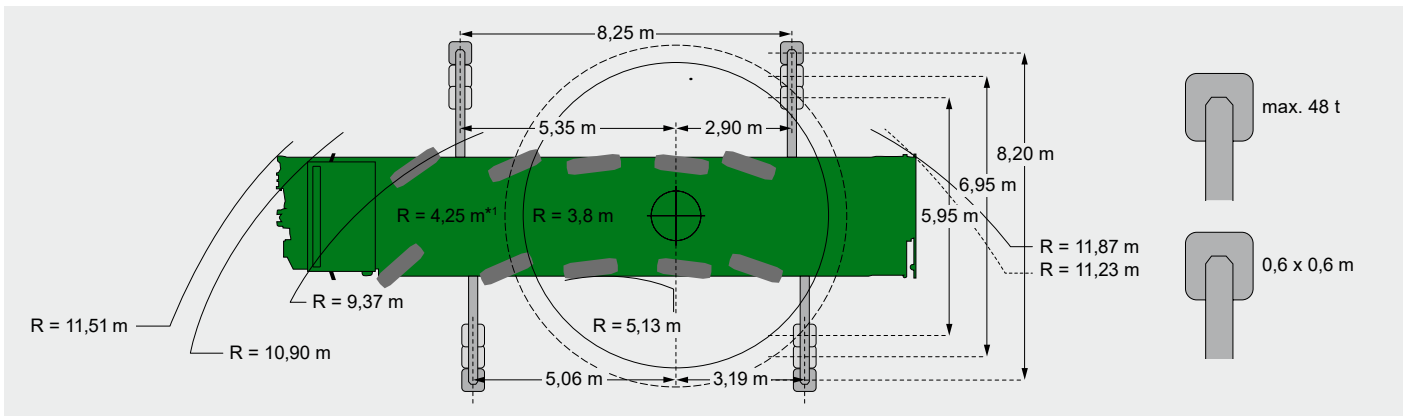
Erection procedure



Transport



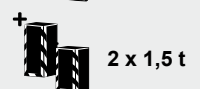
Plan view



Weight

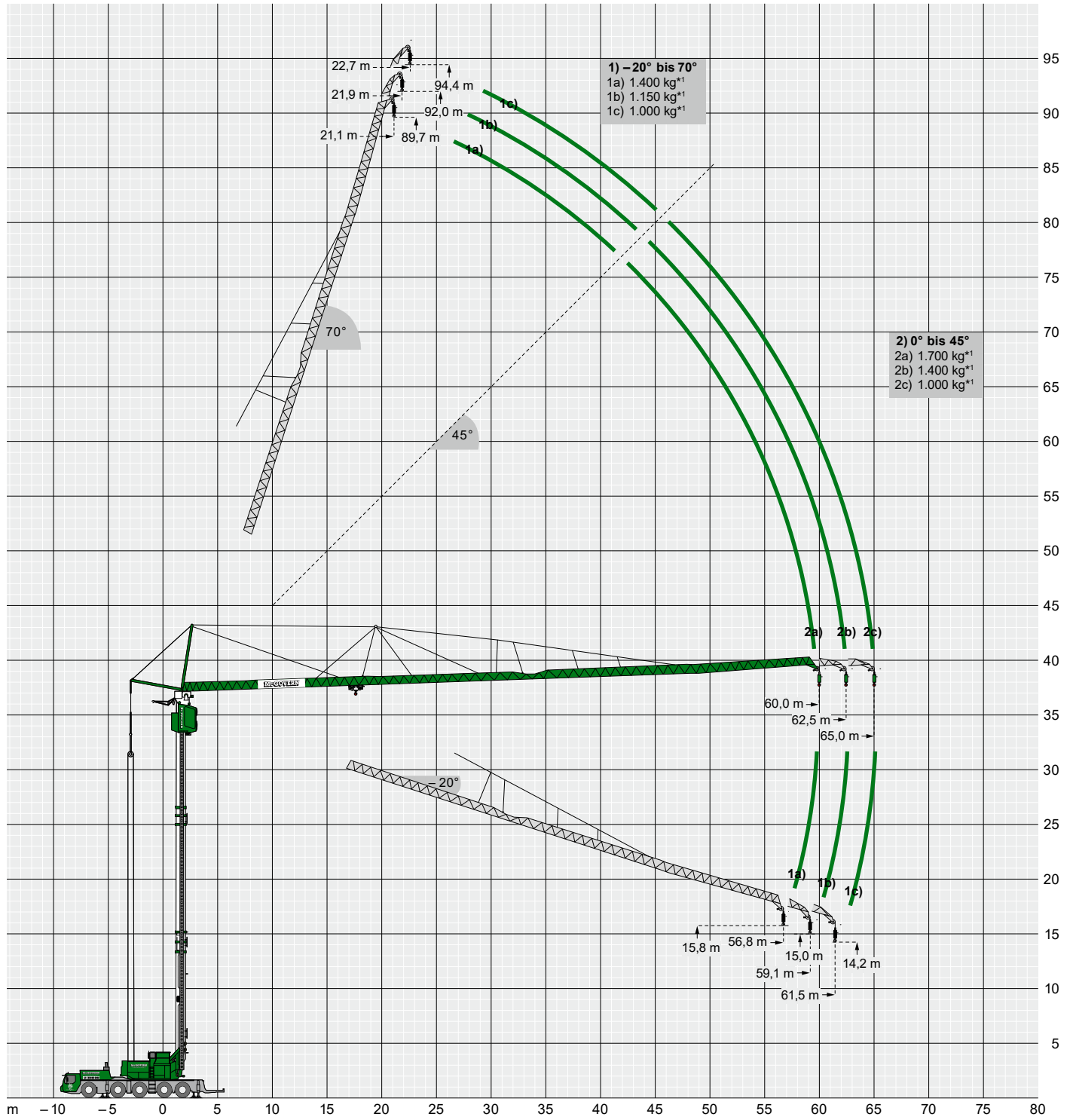
Transportgewicht: 60.000 kg
Transport weight

***1 mit Zusatzballast 69.000 kg**
with additional ballast




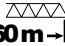
VarioJib


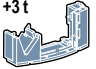


Luffing mode





Load capacities with 9.0 t

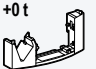



Luffing mode

 **8,20 m x 8,25 m**  **60 m →**


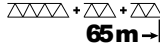
		70° 21,1 m	45° 43,0 m	0° 60,0 m	-20° 56,8 m
+0 t		550	800	550	
+3 t		800	1150	800	
+6 t		1150	1400	1150	
+9 t		1400	1700	1400	





→ kg

 **8,20 m x 8,25 m**  **62,5 m →**

		70° 21,9 m	45° 44,7 m	0° 62,5 m	-20° 59,1 m
+0 t		300	650	300	
+3 t		650	800	650	
+6 t		800	1150	800	
+9 t		1150	1400	1150	

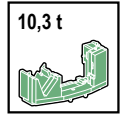
→ kg

 **8,20 m x 8,25 m**  **65 m →**

		70° 22,7 m	45° 46,5 m	0° 65,0 m	-20° 61,5 m
+0 t				300	
+3 t				550	
+6 t				800	
+9 t				1000	

→ kg

(6t) • Trolley mode – Cranes Travel Counterweight ballast (6 t)



8,20 mx 8,25 m

α°	m →	m	kg	m																				
				3,0	6,0	9,0	12,0	15,0	18,0	21,0	24,0	27,0	30,0	33,0	36,0	39,0	42,0	45,0	48,0	51,0	54,0	57,0	58,5	
0°	58,5		3,3 – 13,4	8000	8000				7110	5880	4990	4320	3800	3380	3040	2760	2520	2310	2130	1970	1830	1710	1600	1550
			3,3 – 11,5	8000	8000		7660	6090	5030	4270	3700	3250	2890	2590	2350	2140	1960	1800	1660	1540	1440	1340	1300	
	Plus ²		3,3 – 14,4	8000	8000				7670	6340	5390	4680	4120	3670	3300	3000	2740	2510	2320	2150	2000	1870	1750	1700
15°	56,5		3,2 – 50,0	1800	1800														1750	1630	1550			
			3,2 – 42,0	1800	1800												1650	1530	1420	1320	1250			
	Plus		3,2 – 37,8	2500	2500										2410	2210	2040	1890	1760	1640	1550			
			3,2 – 25,5	2500	2500						2340	2060	1840	1650	1490	1350	1240	1130	1040	960	900			
30°	50,7		3,0 – 16,0	6000	6000			5280	4460	3840	3370	2990	2680	2420	2200	2010	1850	1710	1600					
			3,0 – 14,0	6000	6000		5550	4510	3790	3250	2830	2500	2230	2000	1820	1650	1510	1390	1300					
45°	41,5		2,7 – 39,7	1800	1800												1700							
			2,7 – 36,0	1800	1800										1620	1500								
	Plus		2,7 – 28,5	2650	2650						2500	2240	2020	1840	1700									
			2,7 – 26,1	2650	2650				2550	2250	2000	1800	1630	1500										

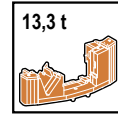
6,95 mx 8,25 m

α°	m →	m	kg	m																			
				3,0	6,0	9,0	12,0	15,0	18,0	21,0	24,0	27,0	30,0	33,0	36,0	39,0	42,0	45,0	48,0	51,0	54,0	57,0	58,5
0°	58,5		3,3 – 10,5	8000	8000		6890	5380	4390	3690	3160	2760	2440	2180	1960	1780	1620	1480	1360	1260	1170	1080	1050
			3,3 – 8,4	8000	8000	7360	5360	4170	3390	2840	2430	2110	1850	1650	1470	1330	1200	1090	1000	920	840	780	750
15°	56,5		3,2 – 36,5	1800	1800												1650	1500	1370	1250	1150	1060	1000
			3,2 – 28,5	1800	1800						1680	1490	1330	1200	1080	980	890	820	750	700			
	Plus		3,2 – 28,0	2500	2500						2300	2040	1830	1650	1500	1370	1260	1160	1070	1000			
			3,2 – 21,8	2500	2500				2230	1930	1690	1500	1340	1200	1090	990	900	820	750	700			
30°	50,7		3,0 – 12,5	6000	6000		4870	3950	3300	2820	2450	2160	1920	1720	1560	1410	1290	1180	1100				
			3,0 – 9,5	6000	6000		4550	3490	2810	2330	1970	1700	1480	1300	1160	1030	930	840	760	700			
45°	41,5		2,7 – 33,5	1800	1800												1630	1470	1350				
			2,7 – 26,5	1800	1800						1750	1520	1330	1170	1040	950							
	Plus		2,7 – 24,8	2650	2650						2380	2080	1840	1640	1470	1350							
			2,7 – 19,8	2650	2650				2450	2060	1750	1520	1330	1180	1050	950							

5,95 mx 8,25 m

α°	m →	m	kg	m																				
				3,0	6,0	9,0	12,0	15,0	18,0	21,0	24,0	27,0	30,0	33,0	36,0	39,0	42,0	45,0	48,0	51,0	54,0	57,0	58,5	
0°	58,5		3,3 – 7,1	8000	8000		6110	4400	3410	2750	2290	1940	1680	1470	1290	1150	1030	920	830	760	690	630	570	550
			3,3 – 4,8	8000	8000	6340	4110	2990	2320	1860	1540	1300	1110	960	840	730	650	570	510	450	400	350	310	300
15°	56,5		3,2 – 23,5	1800	1800						1750	1500	1310	1150	1020	910	810	730	660	590	540	500		
			-	-	-												-							
	Plus		3,2 – 18,0	2500	2500						2070	1750	1510	1310	1160	1020	910	820	730	660	600	540	500	
30°	50,7		3,0 – 8,3	6000	6000		5440	3930	3040	2450	2040	1730	1490	1300	1140	1010	900	800	720	650	600			
			-	-	-												-							
45°	41,5		2,7 – 23,5	1800	1800						1750	1490	1290	1130	990	880	800							
			2,7 – 16,0	1800	1800				1530	1240	1020	850	720	610	520	450	400							
	Plus		2,7 – 17,5	2650	2650						2560	2090	1750	1500	1300	1130	1000	880	800					
			2,7 – 11,9	2650	2650		1960	1530	1240	1020	860	720	620	530	460	400								

(9t) • Trolley mode—with additional ballast (9t) Transported on rear of crane



8,20 mx 8,25 m

α°	m	m	kg	m																		
				3,0	6,0	9,0	12,0	15,0	18,0	21,0	24,0	27,0	30,0	33,0	36,0	39,0	42,0	45,0	48,0	51,0	54,0	57,0
0°	58,5	3,3–13,4	8000	8000			7290	6220	5400	4750	4230	3790	3420	3110	2830	2600	2390	2200	2040	1890	1760	1700
		3,3–12,0	8000	8000			6630	5630	4870	4270	3780	3380	3050	2760	2520	2310	2120	1950	1800	1670	1550	1500
	Plus ²	3,3–14,4	8000	8000			7706	6504	5613	4925	4379	3934	3565	3254	2988	2758	2558	2381	2224	2084	1958	1900
15°	56,5	3,2–54,0	1800	1800																	1700	
		3,2–50,0	1800	1800																	1750	1630
	Plus	3,2–41,3	2500	2500													2450	2250	2080	1930	1800	1700
		3,2–37,8	2500	2500													2410	2210	2040	1890	1760	1640
30°	50,7	3,0–16,0	6000	6000			5320	4540	3940	3480	3100	2790	2530	2310	2120	1960	1810	1700				
		3,0–14,0	6000	6000			5610	4680	4000	3490	3080	2740	2470	2240	2040	1880	1730	1600	1500			
45°	41,5	2,7–39,7	1800	1800																	1700	
		2,7–36,0	1800	1800																	1620	1500
	Plus	2,7–28,5	2650	2650													2500	2240	2020	1840	1700	
		2,7–26,1	2650	2650													2550	2250	2000	1800	1630	1500

kg

6,95 mx 8,25 m

α°	m	m	kg	m																						
				3,0	6,0	9,0	12,0	15,0	18,0	21,0	24,0	27,0	30,0	33,0	36,0	39,0	42,0	45,0	48,0	51,0	54,0	57,0	58,5			
0°	58,5	3,3–12,7	8000	8000			6650	5430	4570	3930	3440	3050	2730	2460	2240	2040	1880	1730	1610	1490	1390	1350				
		3,3–10,5	8000	8000			6930	5440	4460	3760	3230	2830	2510	2240	2020	1840	1680	1540	1420	1310	1220	1130	1100			
15°	56,5	3,2–44,0	1800	1800																	1740	1610	1480	1380	1300	
		3,2–36,5	1800	1800																	1650	1500	1370	1250	1150	1060
	Plus	3,2–33,7	2500	2500													2310	2090	1910	1750	1610	1490	1380	1300		
		3,2–28,0	2500	2500													2300	2040	1830	1650	1500	1370	1260	1160	1070	1000
30°	50,7	3,0–15,0	6000	6000			4860	4070	3490	3040	2680	2390	2150	1950	1780	1630	1500	1400								
		3,0–12,0	6000	6000			4660	3780	3160	2700	2350	2070	1840	1650	1490	1350	1230	1130	1050							
45°	41,5	2,7–39,7	1800	1800																	1700					
		2,7–33,5	1800	1800																	1630	1470	1350			
	Plus	2,7–28,5	2650	2650													2500	2240	2020	1840	1700					
		2,7–24,8	2650	2650													2380	2080	1840	1640	1470	1350				

kg

5,95 mx 8,25 m

α°	m	m	kg	m																											
				3,0	6,0	9,0	12,0	15,0	18,0	21,0	24,0	27,0	30,0	33,0	36,0	39,0	42,0	45,0	48,0	51,0	54,0	57,0	58,5								
0°	58,5	3,3– 9,1	8000	8000			5890	4590	3730	3130	2680	2330	2050	1830	1640	1480	1340	1220	1120	1030	950	880	850								
		3,3– 6,8	8000	8000			5960	4390	3440	2800	2350	2010	1740	1530	1360	1210	1090	980	890	810	740	680	620	600							
15°	56,5	3,2–31,0	1800	1800																	1660	1490	1340	1210	1110	1010	930	850	800		
		3,2–23,5	1800	1800																	1750	1500	1310	1150	1020	910	810	730	660	590	540
	Plus	3,2–23,6	2500	2500													2450	2130	1870	1670	1490	1340	1220	1110	1010	930	860	800			
		3,2–18,0	2500	2500													2070	1750	1510	1310	1160	1020	910	820	730	660	600	540	500		
30°	50,7	3,0–10,5	6000	6000			5180	4040	3290	2760	2360	2050	1800	1600	1430	1290	1170	1060	970	900											
		3,0– 7,8	6000	6000			5080	3680	2850	2300	1910	1610	1390	1210	1060	940	830	740	670	600	550										
45°	41,5	2,7–30,5	1800	1800																	1620	1450	1300	1200							
		2,7–23,5	1800	1800																	1750	1490	1290	1130	990	880	800				
	Plus	2,7–22,2	2650	2650													2410	2090	1840	1630	1460	1310	1200								
		2,7–17,5	2650	2650													2560	2090	1750	1500	1300	1130	1000	880	800						

kg

In comparison to mobile cranes/

